



MONTHLY MEMBERSHIP PROGRESS REPORT

District 322C1

Results as of: 7/31/2015

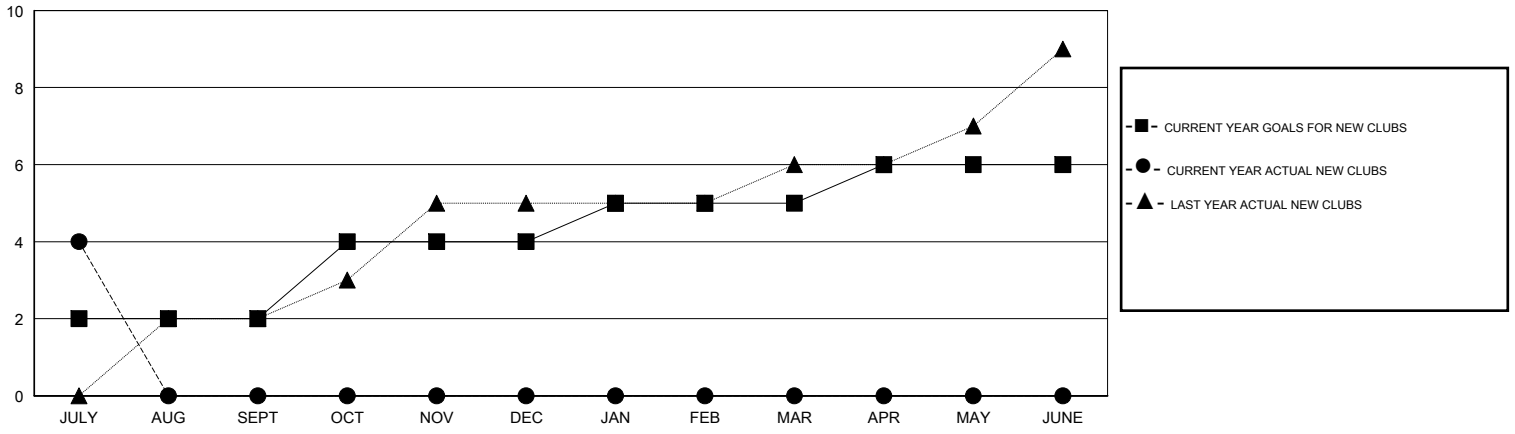
GMT: NAZMUL HAQUE

LOCATION INDIA

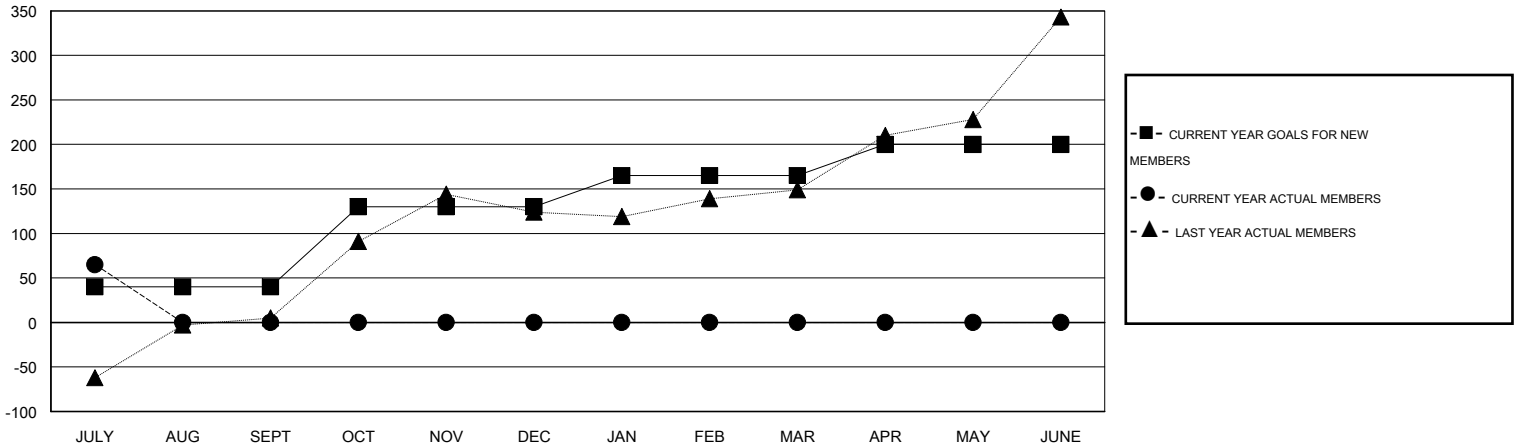
GMT CA 6

Clubs					Members				
RESULTS FOR 2015-2016					RESULTS FOR 2015-2016				
QUARTER	NEW CLUB GOAL	NEW CLUBS	DROPPED CLUBS	NET GAIN/LOSS	QUARTER	NEW MEMBER GOAL	CHARTER AND NEW MEMBERS ADDED	DROPPED MEMBERS	NET GAIN/LOSS
JULY/AUG/SEPT	2	4	0	4	JULY/AUG/SEPT	40	214	149	65
OCT/NOV/DEC	2	0	0	0	OCT/NOV/DEC	90	0	0	0
JAN/FEB/MAR	1	0	0	0	JAN/FEB/MAR	35	0	0	0
APR/MAY/JUNE	1	0	0	0	APR/MAY/JUNE	35	0	0	0

GOALS AND ACTUAL NEW CLUBS CUMULATIVE



GOALS AND ACTUAL MEMBERS CUMULATIVE



DROPPED CLUBS: 0	39 CLUBS OF 98 ADDED 1 OR MORE NEW MEMBERS	<u>GENDER DISTRIBUTION</u>	
<u>DROPPED MEMBERS</u>		MALE	2,356 (77.12%)
DECEASED	1	FEMALE	699 (22.88%)
CLUB CANCELLED	0	FAMILY UNIT MEMBERS 1,357 HEAD OF HOUSEHOLD 581 NON-HEAD OF HOUSEHOLD 776	
OTHER	148		
TOTAL	149		
CLICK HERE FOR HEALTH ASSESSMENT DATA			